

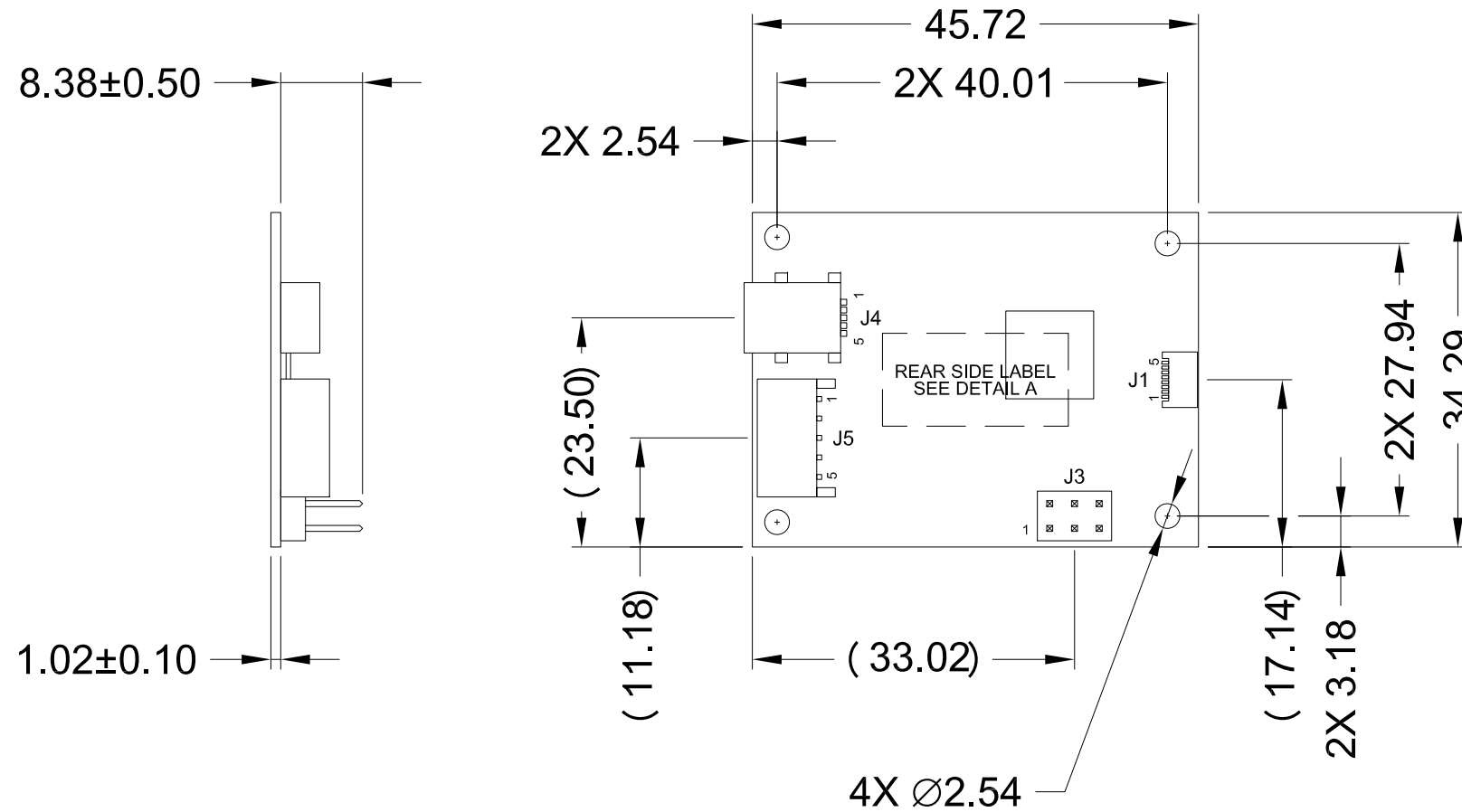
NOTES:

- CONNECTOR FOR J1: MOLEX 503480-0800
- CONNECTOR FOR J3: SAMTEC TSW-103-07-G-D
- CONNECTOR FOR J4: SAMTEC MUSB-05-F-AB-SM-A (STANDARD USB MINI-B)
- CONNECTOR FOR J5: MOSTWELL W2000-R2051221
- DIMENSIONS IN PARENTHESIS ARE FOR REFERENCE ONLY

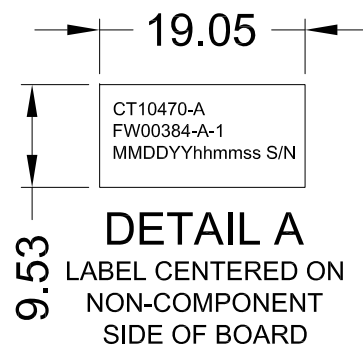


REVISIONS				DWN	DATE
ITEM REV	DWG REV	ECO	DESCRIPTION		
A	1	-	INITIAL RELEASE.	AMH	2-17-16
A	2	-	ADDED LABEL & FIRMWARE FOR OUTSIDE PURCHASE.	AMH	2-26-18

J5 OUTPUT	
PIN	FUNCTION
1	GROUND
2	USB_5V
3	GROUND
4	D+
5	D-



J1 INPUT	
PIN	FUNCTION
1	VDD
2	GROUND
3	SCL
4	SDA
5	/CHG
6	/RESET
7	NC
8	NC



DawarTouch
 1016 North Lincoln Avenue, Pittsburgh, PA 15233
 1.800.366.1904 - 412.322.9900 - Fax: 412.322.9958
 e-mail: sales@dawar.com - www.dawar.com

THIS CONFIDENTIAL DOCUMENT IS THE PROPERTY OF DAWAR TECHNOLOGIES, INC. AND SHALL NOT BE COPIED, REPRODUCED, DISCLOSED, AND/OR USED AS THE BASIS FOR MANUFACTURING OR SALE WITHOUT PERMISSION OF A DULY AUTHORIZED REPRESENTATIVE OF DAWAR TECHNOLOGIES, INC.

FIRMWARE NO. FW00384-A		REV 1	ITEM/DRAWING NO. CT10470-A		DWG REV 2
DESCRIPTION ATMEL I2C-USB BRIDGE BOARD, PROGRAMMED	UNIT MM [INCH]	TOLERANCE ±0.25 [0.010] UNLESS SPECIFIED	SHEET 1 OF 1	DRAWN BY TONY HOUSOS	DATE 2-17-16