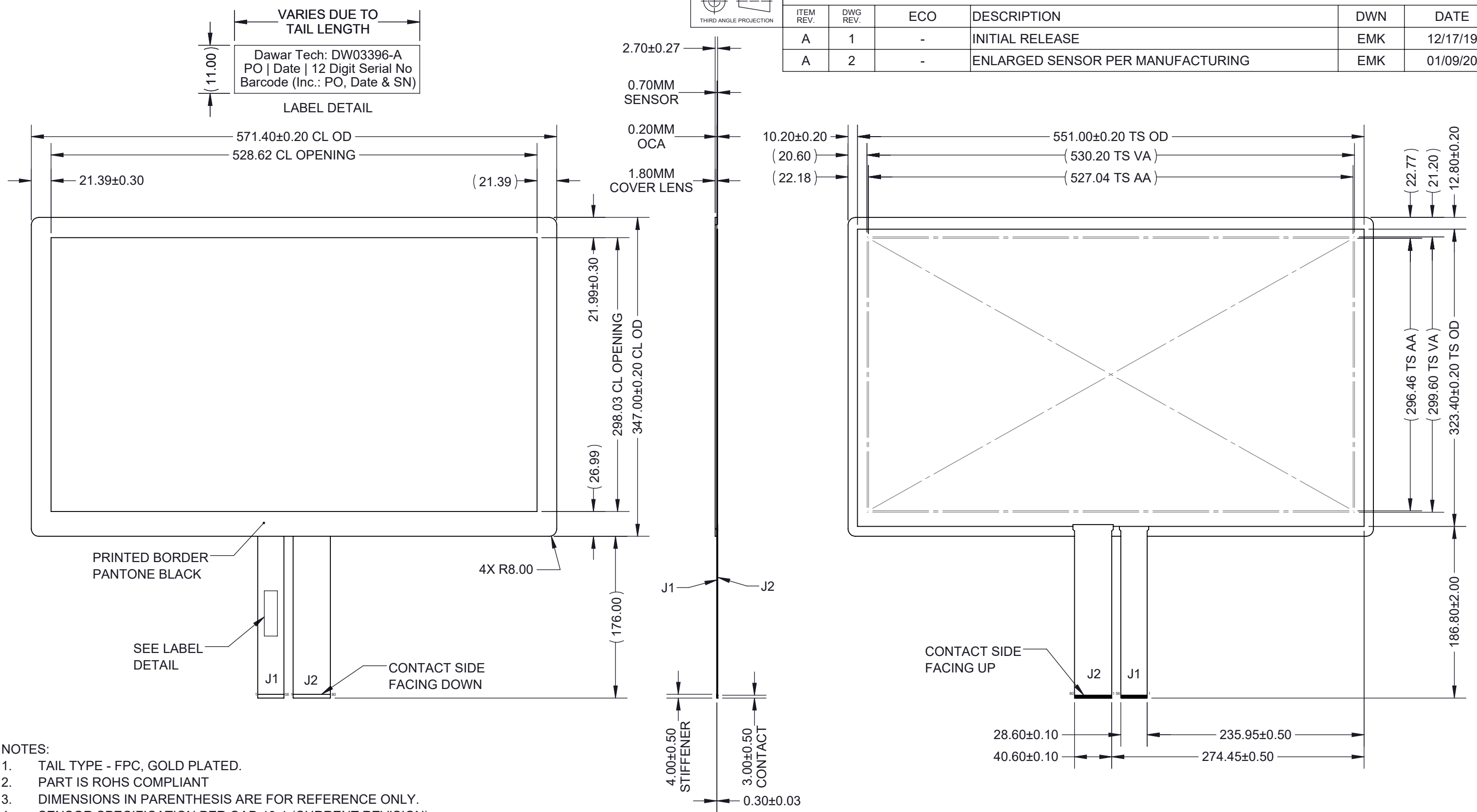


REVISIONS					
ITEM REV.	DWG REV.	ECO	DESCRIPTION	DWN	DATE
A	1	-	INITIAL RELEASE	EMK	12/17/19
A	2	-	ENLARGED SENSOR PER MANUFACTURING	EMK	01/09/20



- NOTES:
1. TAIL TYPE - FPC, GOLD PLATED.
 2. PART IS ROHS COMPLIANT
 3. DIMENSIONS IN PARENTHESIS ARE FOR REFERENCE ONLY.
 4. SENSOR SPECIFICATION PER QAD 19-1 (CURRENT REVISION).
 5. GG2 CONSTRUCTION.
 6. FOR USE WITH 56X80 EETI CONTROLLER (REFER TO STANDARD BOARD CT11105).
 7. TOUCH SENSOR - 0.70mm GLASS WITH DOUBLE-SIDE, INDEX MATCHED, ITO.
 8. COVER LENS - 1.80mm CHEMICALLY STRENGTHENED, SODA LIME GLASS, W/DOUBLE ROUND, PENCIL GROUND EDGE.

DawarTouch[®]

1016 NORTH LINCOLN AVENUE, PITTSBURGH, PA 15233
 PHONE: 1.800.366.1904 - 412.322.9900
 FAX: 412.322.9958
 E-MAIL: SALES@DAWAR.COM - WWW.DAWAR.COM

THIS CONFIDENTIAL DOCUMENT IS THE PROPERTY OF DAWAR TECHNOLOGIES, INC. AND SHALL NOT BE COPIED, REPRODUCED, DISCLOSED, AND/OR USED AS THE BASIS FOR MANUFACTURING OR SALE WITHOUT PERMISSION OF A DULY AUTHORIZED REPRESENTATIVE OF DAWAR TECHNOLOGIES, INC.

ITEM/DRAWING NO. DW03396-A				DWG. REV. 2	
UNIT MM [INCH]	TOLERANCE ±0.25 [0.010] UNLESS SPECIFIED	SHEET 1 OF 1	DRAWN BY EMK	DATE 12/17/19	
DESCRIPTION 23.8"W PCAP GG2 EETI					