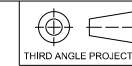


NOTES:

- CONNECTOR J1: OMRON XF3M-0815-1B
- CONNECTOR J2: OMRON XF3M-1015-1B
- CONNECTOR J3: MOST WELL W2000-R2051221
- MINI USB 2.0 INTERFACE J4: SAMTEC MUSB-05-F-AB-SM-A

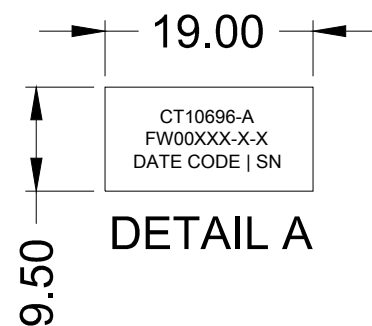
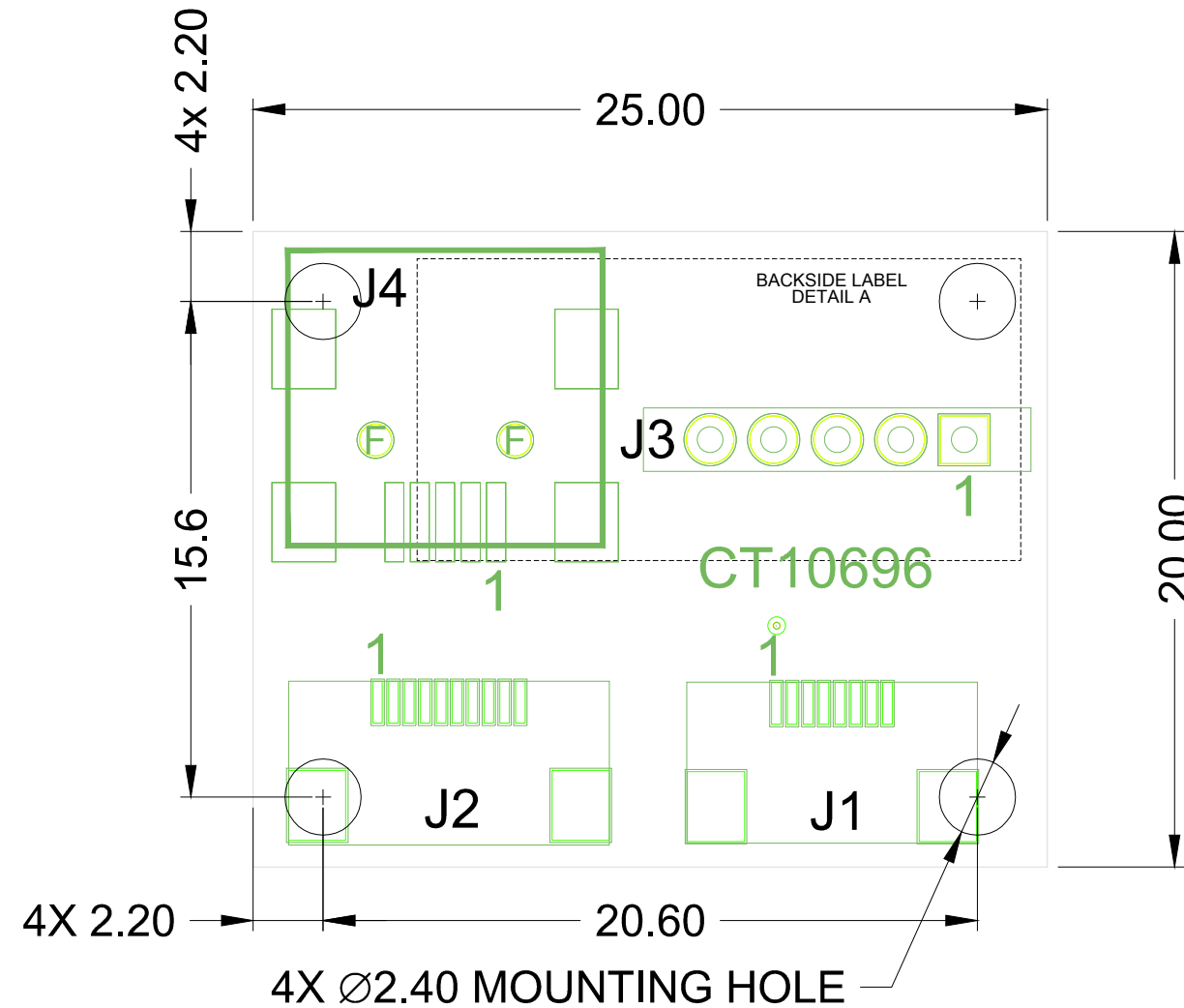


REVISIONS				DWN	DATE
ITEM REV	DWG REV	ECO	DESCRIPTION		
A	1	-	INITIAL RELEASE.	SAM	01-31-17

J1	
PIN	FUNCTION
1	5V
2	GROUND
3	NC
4	NC
5	NC
6	NC
7	D-
8	D+

J2	
PIN	FUNCTION
1	NC
2	NC
3	NC
4	NC
5	NC
6	NC
7	GROUND
8	D+
9	D-
10	5V

J3	
PIN	FUNCTION
1	GROUND
2	5V
3	GROUND
4	D+
5	D-



DawarTouch®
 1016 North Lincoln Avenue, Pittsburgh, PA 15233
 1.800.366.1904 - 412.322.9900 - Fax: 412.322.9958
 e-mail: sales@dawar.com - www.dawar.com

THIS **CONFIDENTIAL** DOCUMENT IS THE PROPERTY OF DAWAR TECHNOLOGIES, INC. AND SHALL NOT BE COPIED, REPRODUCED, DISCLOSED, AND/OR USED AS THE BASIS FOR MANUFACTURING OR SALE WITHOUT PERMISSION OF A DULY AUTHORIZED REPRESENTATIVE OF DAWAR TECHNOLOGIES, INC.

ITEM/DRAWING NO. CT10696-A			DWG REV 1		
SCALE NTS	UNIT MM [INCH]	TOLERANCE ±0.25 [0.010] UNLESS SPECIFIED	SHEET 1 OF 1	DRAWN BY SAM	DATE 01-31-17
DESCRIPTION ADAPTOR BOARD FOR CT10622					